

## 12 and 25 liter melters

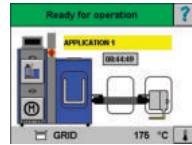
### VersaBlue melters:

- Install quickly and easily
- Provide easy day-to-day operation
- Simplify routine maintenance
- Maximize uptime
- Serve a broad range of industries

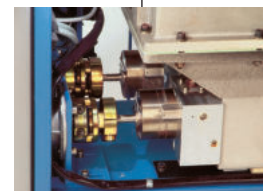
Nordson VersaBlue melters are designed for precise, demanding hot melt adhesive applications. A choice of metering spur-gear pumps with variable-speed AC motors satisfies a wide range of manufacturing requirements. A grid and reservoir tank design reduces adhesive degradation while maximizing adhesive throughput. A powerful industrial PC provides full control of the adhesive system via a touch-screen interface.

Graphical, touch-screen system control with status display of the tank, hose(s) and applicator(s)

Large, accessible tank opening allows easier filling and cleaning



Entry panels make access to melter components quick and easy



Pump shut-off valve and single-tool removal provide quick, easy pump replacement



Quick plug-in hose/gun pairs

Quick connect I-O & Profibus® plugs

**Specifications**

|  |   |  |
|--|---|--|
| Type of System                           | Release-coated grid and reservoir<br>Spur-gear pump with variable speed<br>AC motor   |  |
| Number of Pumps                          | 1 or 2  |  |
| Maximum Pump Rate <sup>1 &amp; 3</sup>   | 1.4 to 82 kg/hr (3 to 181 lb/hr)  |  |
| Filter Type                              | Saturn® basket-style filter   |  |
| Maximum Working Hydraulic Pressure       | 85 bars/8.5 MPa (1230 psi)  |  |
| Operating Temperature Range <sup>4</sup> | 40 to 230°C (100 to 450°F)  |  |
| Ambient Temperature Range                | 0 to 40°C (32 to 104°F)   |  |
| Temperature Control Stability            | ±1°C (2°F)  |  |
| Electrical Service <sup>5</sup>          | 240 VAC 1 phase 50/60 Hz <sup>6</sup><br>200 VAC 3 phase 50/60 Hz <sup>7</sup><br>200 to 240 VAC 3 phase 50/60 Hz<br>380 to 415 VAC-Y (3 phase N/PE) 50/60 Hz<br>400 VAC 3 phase 50/60 Hz <sup>7</sup><br>480 VAC 3 phase 50/60 Hz <sup>7</sup> |  |

|                                      |                 |                 |
|--------------------------------------|-----------------|-----------------|
| <b>Maximum System Power Capacity</b> | <b>12 liter</b> | <b>25 liter</b> |
| 2 hoses/applicators                  | 6960 watts      | 9610 watts      |
| 4 hoses/applicators                  | 10560 watts     | 13210 watts     |
| 6 hoses/applicators                  | 14160 watts     | 16810 watts     |

**Input/Output Capability Standard** 7 outputs; 10 inputs

**Maximum Pressure Sensors** 2

**Melter Dimensions (W x H x D)** 885 x 1382 x 582 mm (34.8 x 54.4 x 22.9 in)

**Installation Dimensions (W x H x D)** 1445 x 1382 x 831 mm (56.9 x 54.4 x 32.7 in)

**Protection** IP54

|  | <b>VersaBlue 12</b>                              | <b>VersaBlue 25</b>                               |
|--|--|---|
| <b>Holding Capacity</b>                  | 12 L (732 in <sup>3</sup> )<br>11.6 kg (25.6 lb) | 25 L (1526 in <sup>3</sup> )<br>24.3 kg (53.4 lb) |
| <b>Throughput (per hour)<sup>1</sup></b> | 18 kg (39.6 lb)                                  | 40 kg (88 lb)                                     |
| <b>Melt Rate (per hour)<sup>1</sup></b>  | 14 kg (30.8 lb)                                  | 25 kg (55 lb)                                     |
| <b>Weight (empty)<sup>2</sup></b>        | 190 kg (418 lb)                                  | 225 kg (495 lb)                                   |
| <b>Number of Applicators</b>             | 2, 4 or 6  | 2, 4 or 6   |

<sup>1</sup> Actual rates will vary depending on adhesive type, application parameters and input voltage.  
<sup>2</sup> Weight depends on melter configuration.  
<sup>3</sup> Range given is for maximum pump rate of various pumps available.  
<sup>4</sup> High temperature unit available with operating range of 40 to 250°C (100 to 480°F).  
<sup>5</sup> Permitted deviation from rated line voltage is ±10%.  
<sup>6</sup> 12-liter melter only; there are hose/gun pair capacity restrictions.  
<sup>7</sup> With integrated transformer.

Casters optional.  
 Profibus and Ethernet I/P optional.  
 Profibus is a registered trademark of Profibus International



**For more information, speak with your Nordson representative or contact your Nordson regional office.**

**United States**  
 Duluth, Georgia  
 (800) 683-2314 **Phone**  
 (866) 667-3329 **Fax**

**Canada**  
 Markham, Ontario  
 (800) 463-3200 **Phone**  
 (905) 475-8821 **Fax**

**Europe**  
 Erkrath, Germany  
 (49) 211-9205-0 **Phone**  
 (49) 211-254658 **Fax**

**Japan**  
 Tokyo, Japan  
 (81) 3-5762-2700 **Phone**  
 (81) 3-5762-2701 **Fax**

**Asia/Australia/  
 Latin America**  
 Amherst, Ohio  
 (440) 985-4797 **Phone**  
 (440) 985-1096 **Fax**



PAL-14-5849  
 Issued 3/14  
 © 2003; 2014 Nordson Corporation  
 All Rights Reserved.  
 Printed in U.S.A.  
 Nordson reserves the right to make design changes between printings.



# VersaBlue<sup>®</sup>

Adhesive Melters

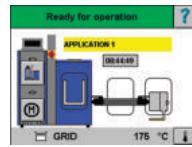
## 50 and 100 liter melters

### VersaBlue melters:

- **Install quickly and easily**
- **Provide easy day-to-day operation**
- **Simplify routine maintenance**
- **Maximize uptime**
- **Serve a broad range of industries**

Nordson VersaBlue melters are designed for precise, demanding hot melt adhesive applications. A choice of metering spur-gear pumps with variable-speed AC motors satisfies a wide range of manufacturing requirements. A grid and reservoir tank design reduces adhesive degradation while maximizing adhesive throughput. A powerful industrial PC provides full control of the adhesive system via a touch-screen interface.

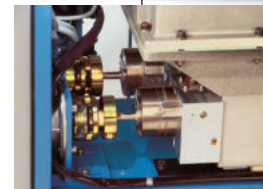
Graphical, touch-screen system control with status display of the tank, hose(s) and applicator(s)



Large, accessible tank opening allows easier filling and cleaning



Entry panels make access to melter components quick and easy



Pump shut-off valve and single-tool removal provide quick, easy pump replacement



Quick plug-in hose/gun pairs

**Specifications**

|  |  |  |
|--|--|--|
| Type of System                           | Release-coated grid and reservoir<br>Spur-gear pump with variable speed AC motor   |  |
| Number of Pumps                          | 1 or 2   |  |
| Maximum Pump Rate <sup>1 &amp; 2</sup>   | 1.4 to 82 kg/hr (3 to 180 lb/hr)   |  |
| Filter Type                              | Saturn® basket-style filter  |  |
| Maximum Working Hydraulic Pressure       | 85 bars/8.5 MPa (1230 psi)   |  |
| Operating Temperature Range <sup>3</sup> | 40 to 230°C (100 to 450°F)   |  |
| Ambient Temperature Range                | 0 to 40°C (32 to 104°F)  |  |
| Temperature Control Stability            | ±1°C (2°F)   |  |
| Electrical Service <sup>4</sup>          | 200 VAC 3 phase 50/60 Hz <sup>5</sup><br>200 to 240 VAC 3 phase 50/60 Hz<br>380 to 415 VAC-Y (3 phase N/PE) 50/60 Hz<br>400 VAC 3 phase 50/60 Hz <sup>5</sup><br>480 VAC 3 phase 50/60 Hz <sup>5</sup> |  |

|                                      |                 |                  |
|--------------------------------------|-----------------|------------------|
| <b>Maximum System Power Capacity</b> | <b>50 liter</b> | <b>100 liter</b> |
| 2 hoses/applicators                  | 14875 watts     | 23490 watts      |
| 4 hoses/applicators                  | 18475 watts     | 27090 watts      |
| 6 hoses/applicators                  | 22075 watts     | 30690 watts      |
| 8 hoses/applicators                  | N/A             | 34290 watts      |

**Input/Output Capability Standard** 7 outputs; 10 inputs

**Maximum Pressure Sensors** 2

|                                      |   |  |
|--------------------------------------|---|--|
|                                      | <b>50 liter</b>                                 | <b>100 liter</b>                                 |
| <b>Melter Dimensions (W x H x D)</b> | 1000 x 1382 x 782 mm<br>(39.4 x 54.4 x 30.8 in) | 1100 x 1382 x 1035 mm<br>(43.3 x 54.4 x 40.8 in) |

|  |  |  |
|--|--|--|
| <b>Installation Dimensions (W x H x D)</b> | 1760 x 1661 x 1125 mm<br>(69.3 x 65.4 x 44.3 in) | 2111 x 1565 x 1496 mm<br>(83.1 x 61.6 x 58.9 in) |
|--|--|--|

**Protection** IP54

|  | <b>VersaBlue 50</b>                                | <b>VersaBlue 100</b>                                |
|--|--|---|
| <b>Holding Capacity</b>                  | 50 L (3051 in <sup>3</sup> )<br>48.5 kg (106.7 lb) | 100 L (6102 in <sup>3</sup> )<br>97.0 kg (213.4 lb) |
| <b>Throughput (per hour)<sup>1</sup></b> | 75 kg (165 lb)                                     | 150 kg (330 lb)                                     |
| <b>Melt Rate (per hour)<sup>1</sup></b>  | 50 kg (110 lb)                                     | 100 kg (220 lb)                                     |
| <b>Weight (empty)<sup>6</sup></b>        | 275 kg (606 lbs)                                   | 360 kg (798 lb)                                     |
| <b>Number of Applicators</b>             | 2, 4 or 6  | 2, 4, 6 or 8  |

<sup>1</sup> Actual rates will vary depending on adhesive type, application parameters and input voltage.

<sup>2</sup> Range given is for maximum pump rate of various pumps available.

<sup>3</sup> High temperature unit available with operating range of 40 to 250°C (100 to 480°F).

<sup>4</sup> Permitted deviation from rated line voltage is ±10%.

<sup>5</sup> With integrated transformer.

<sup>6</sup> Weight depends on melter configuration.

Casters optional.

Profibus and Ethernet I/P optional.

Profibus is a registered trademark of Profibus International



**For more information, speak with your Nordson representative or contact your Nordson regional office.**

**United States**

Duluth, Georgia  
(800) 683-2314 **Phone**  
(866) 667-3329 **Fax**

**Canada**

Markham, Ontario  
(800) 463-3200 **Phone**  
(905) 475-8821 **Fax**

**Europe**

Erkrath, Germany  
(49) 211-9205-0 **Phone**  
(49) 211-254658 **Fax**

**Japan**

Tokyo, Japan  
(81) 3-5762-2700 **Phone**  
(81) 3-5762-2701 **Fax**

**Asia/Australia/  
Latin America**

Amherst, Ohio  
(440) 985-4797 **Phone**  
(440) 985-1096 **Fax**

**Find us on:**



PAL-14-5850  
Issued 3/14  
© 2003; 2014 Nordson Corporation  
All Rights Reserved.  
Printed in U.S.A.  
Nordson reserves the right to make design changes between printings.